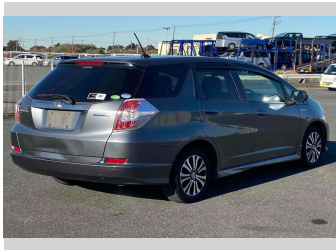
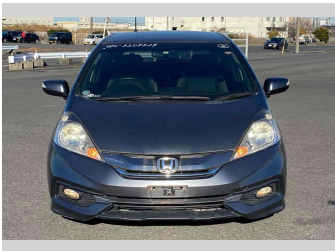
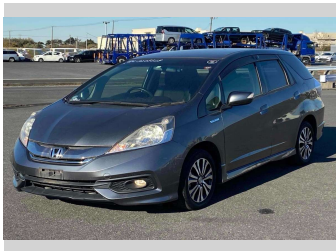


2014 Honda Fit Shuttle Hybrid Smart Selection



Purchase Price

\$9,880

Includes GST
Excludes on-road costs of \$595

Finance may be available on this vehicle. Ask one of our friendly staff for more information.

Gain peace of mind with Mechanical Breakdown Insurance. **Ask us how.**

Top features

- » ABS Brakes
- » Air Conditioning
- » Alloys
- » Buttons
- » Car Stereo
- » Central Locking
- » Climate Control
- » Cruise Control
- » Dark Interior
- » Electric Windows
- » Fog Lights
- » Folding Side Mirrors
- » Half Leather Seats
- » Heated Seats
- » Heated Seats
- » Keyless Entry
- » Lane Departure Warning...
- » Paddle Shift

Body Style

5 door, Station Wagon

Odometer

98,526 km

Engine

1300 cc, Hybrid

Fuel Type

Hybrid

Transmission

Automatic, 2WD

Wheels

-

VIN

7AT08G2YX25207529

Interior

Gray

Safety



Based on 2024 VSRR rating

Reg No.

-

Ext Colour

Gray

History

-

Seats

5 seats, Leather

CO2 Emissions

★★★★☆

114 grams/km

Energy Economy

★★★★☆☆

**Annual fuel cost of \$1,920
4.9L per 100km**

Cost per year is an estimate based on petrol price of \$2.80 per litre and an average distance of 14000 km. Emissions and Energy Economy figures standardised to 3P WLTP.

Stock ID: 14788



JAN JAPAN MOTORS

Jan Japan - Henderson | Phone 022 4122 366 | Email sales@janjapan.co.nz
320 Lincoln Road, Henderson, Auckland 0610, New Zealand
www.janjapan.co.nz