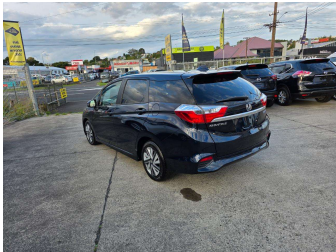


# 2015 Honda Shuttle Hybrid



Purchase Price

**\$11,980**

Includes GST  
Excludes on-road costs of \$595

Finance may be available on this vehicle. Ask one of our friendly staff for more information.

Gain peace of mind with Mechanical Breakdown Insurance. **Ask us how.**

### Top features

- » ABS Brakes
- » Air Conditioning
- » Car Stereo
- » Central Locking
- » Cruise Control
- » Dark Interior
- » Digital Dash
- » Electric Mirrors
- » Electric Windows
- » Folding Side Mirrors
- » Keyless Entry
- » Paddle Shift
- » Power Steering
- » Push Start
- » Reversing Camera
- » Spoiler
- » Touch Screen Stereo
- » Wheel Covers

Body Style

**5 door, Station Wagon**

Odometer

**92,988 km**

Engine

**1500 cc, Hybrid**

Fuel Type

**Hybrid**

Transmission

**Automatic, 2WD**

Wheels

-

VIN

**7AT08G2YX25013443**

Interior

**Gray**

Safety



Based on 2024 VSRR rating

Reg No.

-

Ext Colour

**Dark Blue**

History

-

Seats

**5 seats**

CO2 Emissions

★★★★☆

**95 grams/km**

Energy Economy

★★★★☆☆

**Annual fuel cost of \$1,570  
4L per 100km**

Cost per year is an estimate based on petrol price of \$2.80 per litre and an average distance of 14000 km. Emissions and Energy Economy figures standardised to 3P WLTP.

**Stock ID: 14595**