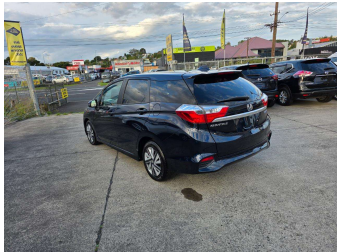


2015 Honda Fit Shuttle Hybrid X



Purchase Price

\$11,980

Includes GST
Excludes on-road costs of \$595

Finance may be available on this vehicle. Ask one of our friendly staff for more information.

Gain peace of mind with Mechanical Breakdown Insurance. **Ask us how.**

Top features

- » ABS Brakes
- » Air Conditioning
- » Car Stereo
- » Central Locking
- » Cruise Control
- » Dark Interior
- » Digital Dash
- » Electric Mirrors
- » Electric Windows
- » Folding Side Mirrors
- » Keyless Entry
- » Paddle Shift
- » Power Steering
- » Push Start
- » Reversing Camera
- » Spoiler
- » Touch Screen Stereo
- » Wheel Covers

Body Style

5 door, Station Wagon

Odometer

92,988 km

Engine

1500 cc, Hybrid

Fuel Type

Hybrid

Transmission

Automatic, 2WD

Wheels

-

VIN

7AT08G2YX25013443

Interior

Gray

Safety



Based on 2024 VSRR rating

Reg No.

-

Ext Colour

Black

History

-

Seats

5 seats

CO2 Emissions

★★★★☆

95 grams/km

Energy Economy

★★★★☆☆

**Annual fuel cost of \$1,570
4L per 100km**

Cost per year is an estimate based on petrol price of \$2.80 per litre and an average distance of 14000 km. Emissions and Energy Economy figures standardised to 3P WLTP.

Stock ID: 14595



JAN JAPAN MOTORS

Jan Japan - North Shore | Phone 09 553 8134 | Email wairau@janjapan.co.nz
96 Wairau Road, Wairau Valley, Auckland 0627, New Zealand
www.janjapan.co.nz