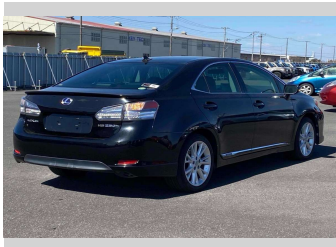


2012 Lexus HS250H Version S



Purchase Price

\$12,500

Includes GST
Excludes on-road costs of \$595

Finance may be available on this vehicle. Ask one of our friendly staff for more information.

Gain peace of mind with Mechanical Breakdown Insurance. **Ask us how.**

Top features

- » ABS Brakes
- » Air Conditioning
- » Alloys
- » Car Stereo
- » CD Player
- » Cruise Control
- » Electric Windows
- » Fog Lights
- » Keyless Entry
- » Power Seats
- » Power Steering
- » Push Start
- » Reversing Camera
- » Winker Mirror

Body Style

4 door, Sedan

Odometer

70,424 km

Engine

2400 cc, Hybrid

Fuel Type

Hybrid

Transmission

Automatic, 2WD

Wheels

-

VIN

7AT0B01CX25053921

Interior

Gray

Safety



Based on 2024 VSRR rating

Reg No.

-

Ext Colour

Black

History

-

Seats

5 seats

CO2 Emissions

★★★★☆

138 grams/km

Energy Economy

★★★★☆☆

**Annual fuel cost of \$2,350
6L per 100km**

Cost per year is an estimate based on petrol price of \$2.80 per litre and an average distance of 14000 km. Emissions and Energy Economy figures standardised to 3P WLTP.

Stock ID: 15100



JAN JAPAN MOTORS

Jan Japan - Wholesale | Phone 09 972 1204 | Email sales@janjapan.co.nz
10 Progressive Way, East Tāmaki, Auckland 2016, New Zealand
www.janjapan.co.nz



★★★★☆
4.27 | 343 reviews