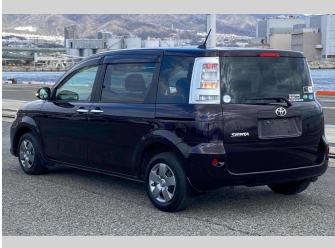
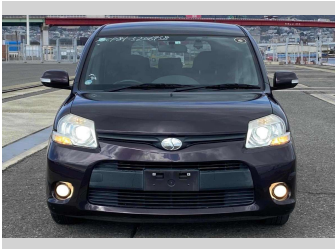
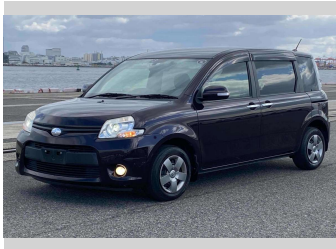


2014 Toyota Sienta DICE



Purchase Price

\$8,300

Includes GST
Excludes on-road costs of \$595

Finance may be available on this vehicle. Ask one of our friendly staff for more information.

Gain peace of mind with Mechanical Breakdown Insurance. **Ask us how.**

Top features

- » ABS Brakes
- » Air Conditioning
- » Electric Windows
- » Fog Lights
- » Power Steering
- » Winker Mirror

Body Style

5 door, Van

Odometer

100,927 km

Engine

1500 cc

Fuel Type

Petrol

Transmission

Automatic, 2WD

Wheels

-

VIN

7AT0H64YX25206958

Interior

Gray

Safety



Based on 2024 VSRR rating

Reg No.

-

Ext Colour

Purple

History

-

Seats

7 seats

CO2 Emissions

★★★★★☆☆

156 grams/km

Energy Economy

★★★★☆☆☆☆

**Annual fuel cost of \$2,590
6.6L per 100km**

Cost per year is an estimate based on petrol price of \$2.80 per litre and an average distance of 14000 km. Emissions and Energy Economy figures standardised to 3P WLTP.

Stock ID: 14826