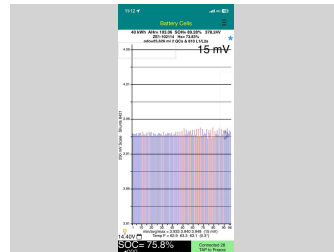
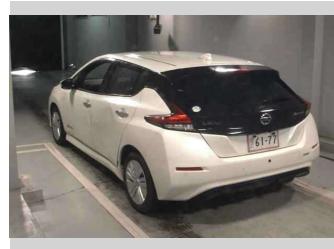


2021 Nissan Leaf S



NJ JAPAN MOTORS

WHY CHOOSE US?

NJ JAPAN MOTORS has been supplying top quality vehicles, parts, and auto parts from major Japanese auction since 2005. We are committed to providing exceptional before, during and after sale service, ensuring customer satisfaction, and building a solid reputation in the New Zealand automobile market.

NEW ARRIVALS

Wide choice of new arrivals from major Japanese auction.

WARRANTY

3 Year / 100,000 km warranty on all vehicles.

FINANCE

Finance options available for all vehicles.

DELIVERY

Delivery to your door, nationwide.

SEATING CAR

SCAR

MPV

HATCHBACK

Purchase Price **\$20,980**

Includes GST
Excludes on-road costs of \$695

Finance may be available on this vehicle. Ask one of our friendly staff for more information.

Gain peace of mind with Mechanical Breakdown Insurance. **Ask us how.**

- Top features**
- » ABS Brakes
 - » Air Conditioning
 - » Car Stereo
 - » Central Locking
 - » Climate Control
 - » Electric Windows
 - » Heated Seats
 - » Parking Sensors
 - » Power Steering
 - » Push Start
 - » Reversing Camera
 - » Wheel Covers
 - » Winker Mirror

Body Style
5 door, Hatchback

Odometer
41,232 km

Engine
Electric

Fuel Type
Electricity

Transmission
Automatic, 2WD

Wheels
-

VIN
-

Interior
Grey

Safety
-

Reg No.
-

Ext Colour
Pearl White

History
-

Seats
5 seats

CO2 Emissions
-

Energy Economy
-

Stock ID: 17401