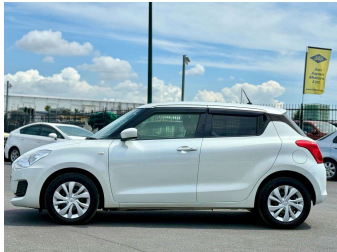


2019 Suzuki Swift



Purchase Price

\$11,980

Includes GST
Excludes on-road costs of \$595

Finance may be available on this vehicle. Ask one of our friendly staff for more information.

Gain peace of mind with Mechanical Breakdown Insurance. **Ask us how.**

Top features

- » ABS Brakes
- » Air Conditioning
- » Alarm
- » Car Stereo
- » Central Locking
- » Cruise Control
- » Dark Interior
- » Digital Dash
- » Electric Mirrors
- » Electric Windows
- » Folding Side Mirrors
- » Heated Seats
- » Keyless Entry
- » Lane Departure Warning...
- » Power Steering
- » Pre-Collision System
- » Push Start
- » Radar Cruise Control

Body Style

5 door, Hatchback

Odometer

78,920 km

Engine

1200 cc

Fuel Type

Petrol

Transmission

Automatic, 2WD

Wheels

-

VIN

7AT0GK0CX24134988

Interior

Gray

Safety



Based on 2024 UCSR rating for 17-22 models

Reg No.

-

Ext Colour

Pearl White

History

-

Seats

5 seats

CO2 Emissions

★★★★☆

119 grams/km

Energy Economy

★★★★☆☆

**Annual fuel cost of \$2,000
5.1L per 100km**

Cost per year is an estimate based on petrol price of \$2.80 per litre and an average distance of 14000 km. Emissions and Energy Economy figures standardised to 3P WLTP.

Stock ID: 1121757



JAN JAPAN MOTORS

Jan Japan - Henderson | Phone 022 4122 366 | Email sales@janjapan.co.nz
320 Lincoln Road, Henderson, Auckland 0610, New Zealand
www.janjapan.co.nz