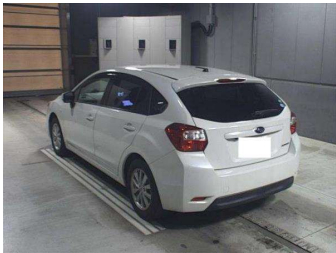


# 2015 Subaru Impreza 1.6I-L



Purchase Price

**\$12,380**

Includes GST  
Excludes on-road costs of \$695

Finance may be available on this vehicle. Ask one of our friendly staff for more information.

Gain peace of mind with Mechanical Breakdown Insurance. **Ask us how.**

### Top features

- » ABS Brakes
- » Air Conditioning
- » Electric Windows
- » Fog Lights
- » Power Steering
- » Spoiler

Body Style  
**5 door, Hatchback**

Odometer  
**75,784 km**

Engine  
**1600 cc**

Fuel Type  
**Petrol**

Transmission  
**Automatic, 2WD**

Wheels  
**-**

VIN  
**7AT0GF09X23028424**

Interior  
**Gray**

Safety



Based on 2023 UCSR rating for 12-16 models

Reg No.  
**-**

Ext Colour  
**White**

History  
**-**

Seats  
**5 seats**

CO2 Emissions  
**★★★★☆**  
**153 grams/km**

Energy Economy  
**★★★★☆☆**

**Annual fuel cost of \$2,590**  
**6.6L per 100km**

Cost per year is an estimate based on petrol price of \$2.80 per litre and an average distance of 14000 km. Emissions and Energy Economy figures standardised to 3P WLTP.

**Stock ID: 886129**