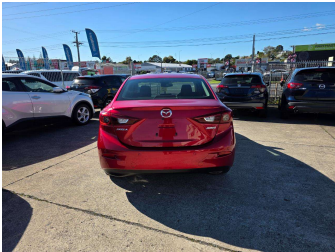
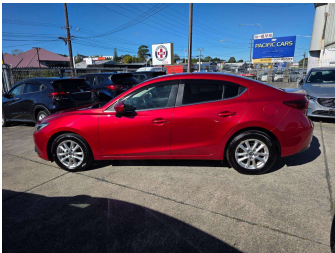


2016 Mazda Axela Hybrid S



Purchase Price

\$16,480

Includes GST
Excludes on-road costs of \$595

Finance may be available on this vehicle. Ask one of our friendly staff for more information.

Gain peace of mind with Mechanical Breakdown Insurance. **Ask us how.**

Top features

- » ABS Brakes
- » Air Conditioning
- » Alloys
- » Blind Spot Monitoring
- » Car Stereo
- » Central Locking
- » Cruise Control
- » Dark Interior
- » Digital Dash
- » Electric Mirrors
- » Electric Windows
- » Fog Lights
- » Folding Side Mirrors
- » Keyless Entry
- » Parking sensors
- » Power Steering
- » Push Start
- » Reversing Camera

Body Style

4 door, Sedan

Odometer

75,495 km

Engine

2000 cc, Hybrid

Fuel Type

Hybrid

Transmission

Automatic, 2WD

Wheels

-

VIN

-

Interior

Gray

Safety



Based on 2024 UCSR rating for 13-19 models

Reg No.

-

Ext Colour

Red

History

-

Seats

5 seats

CO2 Emissions

★★★★★☆☆

97 grams/km

Energy Economy

★★★★★☆☆

Annual fuel cost of \$1,610
4.1L per 100km

Cost per year is an estimate based on petrol price of \$2.80 per litre and an average distance of 14000 km. Emissions and Energy Economy figures standardised to 3P WLTP.

Stock ID: 14801