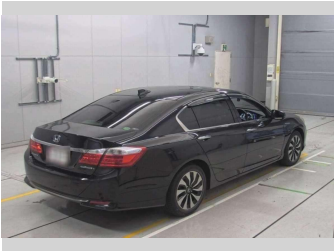
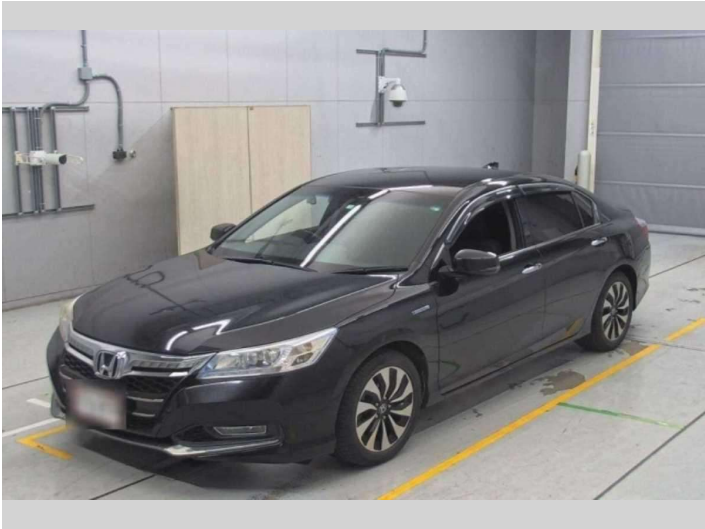


# 2014 Honda Accord LX



**WHY CHOOSE US ?**  
Jan Trading Co. has been acquiring top quality vehicles, parts and auto parts from major Japanese auctions since 1988. We are committed to providing exceptional service, during and after sale service, ensuring customer satisfaction, and building a solid reputation in the New Zealand automobile market.

**Japan**  
We have a large stock of cars in Japan and we can offer you the best quality vehicles.

**Bulk Shipping**  
We have a large fleet of containers and we can offer you the best shipping rates.

**Volume Processing in NZ**  
We have a large fleet of containers and we can offer you the best shipping rates.

**Direct to our customers**  
We have a large fleet of containers and we can offer you the best shipping rates.

**Audi A8**

**BMW 7 Series**

**Mercedes S-Class**

**Porsche Panamera**

## Purchase Price

Includes GST  
Excludes on-road costs of \$495

POA

Finance may be available on this vehicle. Ask one of our friendly staff for more information.

Gain peace of mind with Mechanical Breakdown Insurance. **Ask us how.**

### Top features

- » ABS Brakes
- » Air Conditioning
- » Alloys
- » Car Stereo
- » Electric Windows
- » Power Steering

Body Style  
**4 door, Sedan**

Odometer  
**91,620 km**

Engine  
**2000 cc, Hybrid**

Fuel Type  
**Hybrid**

Transmission  
**Automatic, 2WD**

Wheels  
-

VIN  
-

Interior  
**Grey**

Safety  
-

Reg No.  
-

Ext Colour  
**Black**

History  
-

Seats  
**5 seats**

CO2 Emissions  
-

Energy Economy  
-

Stock ID: 15637



Jan Japan - Wholesale | Phone 09 972 1204 | Email [sales@janjapan.co.nz](mailto:sales@janjapan.co.nz)  
10 Progressive Way, East Tāmaki, Auckland 2016, New Zealand  
[www.janjapan.co.nz](http://www.janjapan.co.nz)

4.27 | 345 reviews