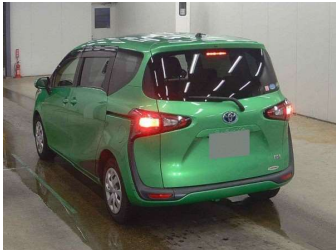


# 2016 Toyota Sienta HYBRID G



## Purchase Price

Includes GST  
Excludes on-road costs of \$595

**\$15,900**

Finance may be available on this vehicle. Ask one of our friendly staff for more information.

Gain peace of mind with Mechanical Breakdown Insurance. **Ask us how.**

## Top features

- » ABS Brakes
- » Air Conditioning
- » Alarm
- » Car Stereo
- » Central Locking
- » Cruise Control
- » Dark Interior
- » Digital Dash
- » Electric Mirrors
- » Electric Windows
- » Fog Lights
- » Folding Side Mirrors
- » Keyless Entry
- » Lane Departure Warning...
- » Power Seats
- » Power Steering
- » Pre-Collision System
- » Push Start

Body Style

**5 door, Van**

Odometer

**97,900 km**

Engine

**1500 cc, Hybrid**

Fuel Type

**Hybrid**

Transmission

**Automatic, 2WD**

Wheels

-

VIN

**7AT0H64YX24003806**

Interior

**Gray**

Safety



Based on 2024 VSRR rating

Reg No.

-

Ext Colour

**Green**

History

-

Seats

**6 seats**

CO2 Emissions

★★★★☆

**107 grams/km**

Energy Economy

★★★★☆☆

**Annual fuel cost of \$1,800  
4.6L per 100km**

Cost per year is an estimate based on petrol price of \$2.80 per litre and an average distance of 14000 km. Emissions and Energy Economy figures standardised to 3P WLTP.

**Stock ID: 1155779**



**JAN JAPAN MOTORS**

Jan Japan - Mt Wellington | Phone 09 278 9643 | Email  
sales.mtw@janjapan.co.nz  
5 Fraser Road, Mount Wellington, Auckland 1072  
www.janjapan.co.nz