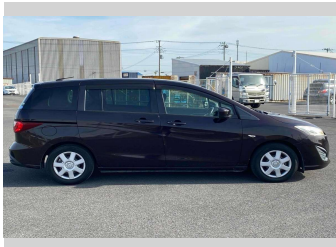
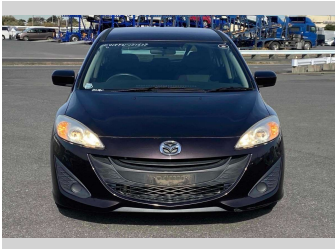


# 2015 Mazda Premacy 20C



## Purchase Price

Includes GST  
Excludes on-road costs of \$595

**\$9,880**

Finance may be available on this vehicle. Ask one of our friendly staff for more information.

Gain peace of mind with Mechanical Breakdown Insurance. **Ask us how.**

## Top features

- » ABS Brakes
- » Air Conditioning
- » Electric Windows
- » Power Steering

### Body Style

**5 door, Station Wagon**

### Odometer

**91,121 km**

### Engine

**2000 cc**

### Fuel Type

**Petrol**

### Transmission

**Automatic, 2WD**

### Wheels

-

### VIN

**7AT0C133X25131639**

### Interior

**Gray**

### Safety



Based on 2024 VSRR rating

### Reg No.

-

### Ext Colour

**Brown**

### History

-

### Seats

**7 seats**

### CO2 Emissions

★★★★★☆☆

**163 grams/km**

### Energy Economy

★★★☆☆☆☆

**Annual fuel cost of \$2,740  
7L per 100km**

Cost per year is an estimate based on petrol price of \$2.80 per litre and an average distance of 14000 km. Emissions and Energy Economy figures standardised to 3P WLTP.

**Stock ID: 14618**