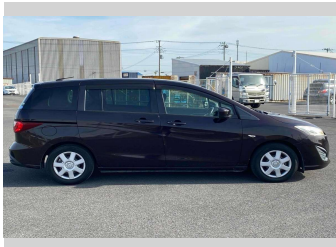
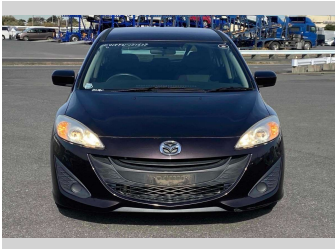


2015 Mazda Premacy 20C



Purchase Price

Includes GST
Excludes on-road costs of \$595

\$9,580

Finance may be available on this vehicle. Ask one of our friendly staff for more information.

Gain peace of mind with Mechanical Breakdown Insurance. **Ask us how.**

Top features

- » ABS Brakes
- » Air Conditioning
- » Electric Windows
- » Power Steering

Body Style

5 door, Station Wagon

Odometer

91,121 km

Engine

2000 cc

Fuel Type

Petrol

Transmission

Automatic, 2WD

Wheels

-

VIN

7AT0C133X25131639

Interior

Gray

Safety



Based on 2024 VSRR rating

Reg No.

-

Ext Colour

Brown

History

-

Seats

7 seats

CO2 Emissions

★★★★★☆☆

163 grams/km

Energy Economy

★★★☆☆☆☆

**Annual fuel cost of \$2,740
7L per 100km**

Cost per year is an estimate based on petrol price of \$2.80 per litre and an average distance of 14000 km. Emissions and Energy Economy figures standardised to 3P WLTP.

Stock ID: 14618