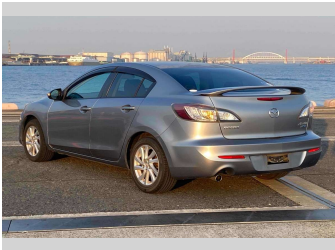
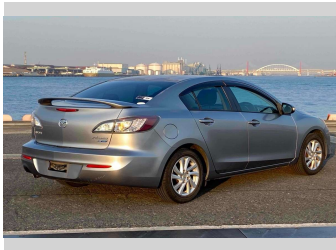
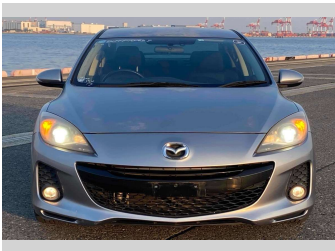
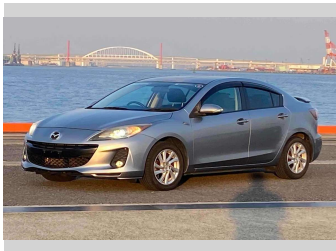
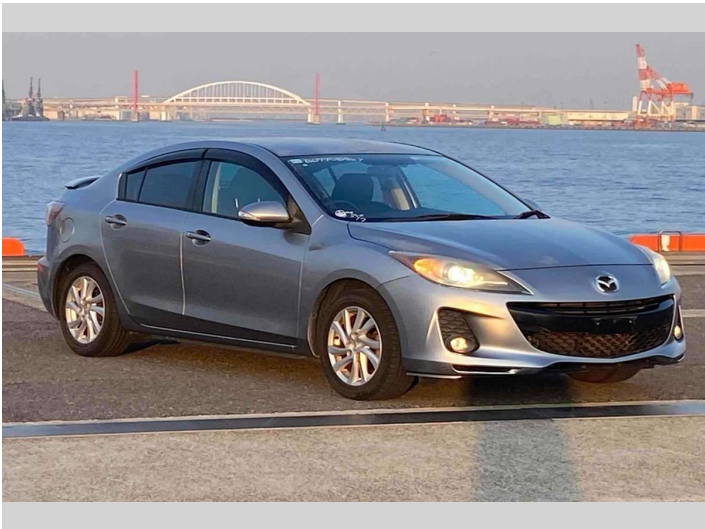


# 2012 Mazda Axela 20E SKYACTIV



## Purchase Price

Includes GST  
Excludes on-road costs of \$595

**\$9,780**

Finance may be available on this vehicle. Ask one of our friendly staff for more information.

Gain peace of mind with Mechanical Breakdown Insurance. **Ask us how.**

## Top features

- » ABS Brakes
- » Air Conditioning
- » Alloys
- » CD Player
- » Electric Windows
- » Fog Lights
- » Keyless Entry
- » Paddle Shift
- » Power Steering
- » Push Start
- » Tiptronic
- » Winker Mirror

## Body Style

**4 door, Sedan**

## Odometer

**83,567 km**

## Engine

**2000 cc**

## Fuel Type

**Petrol**

## Transmission

**Automatic, 2WD**

## Wheels

-

## VIN

-

## Interior

**Gray**

## Safety

-

## Reg No.

-

## Ext Colour

**Gray**

## History

-

## Seats

**5 seats**

## CO2 Emissions

-

## Energy Economy

-

**Stock ID: 15210**



Jan Japan - Wholesale | Phone 09 972 1204 | Email [sales@janjapan.co.nz](mailto:sales@janjapan.co.nz)  
10 Progressive Way, East Tāmaki, Auckland 16, New Zealand  
[www.janjapan.co.nz](http://www.janjapan.co.nz)

