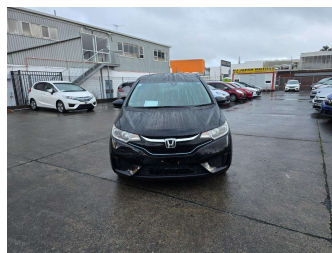


# 2016 Honda Fit Hybrid L Package



**Purchase Price**

**\$12,980**

Includes GST  
Excludes on-road costs of \$695

Finance may be available on this vehicle. Ask one of our friendly staff for more information.

Gain peace of mind with Mechanical Breakdown Insurance. **Ask us how.**

- Top features**
- » ABS Brakes
  - » Air Conditioning
  - » Car Stereo
  - » Central Locking
  - » Climate Control
  - » Cruise Control
  - » Dark Interior
  - » Digital Dash
  - » Electric Mirrors
  - » Electric Windows
  - » Folding Side Mirrors
  - » Keyless Entry
  - » Power Steering
  - » Push Start
  - » Reversing Camera
  - » Touch Screen Stereo
  - » Wheel Covers
  - » Winker Mirror

Body Style  
**5 door, Hatchback**

Odometer  
**82,335 km**

Engine  
**1500 cc, Hybrid**

Fuel Type  
**Hybrid**

Transmission  
**Automatic, 2WD**

Wheels  
-

VIN  
**7AT08G2YX26312433**

Interior  
**Grey**

Safety



Based on 2025 UCSR rating for 14-20 models

Reg No.

-

Ext Colour  
**Black**

History

-

Seats  
**5 seats**

CO2 Emissions  
**★★★★☆**  
**92 grams/km**

Energy Economy  
**★★★★☆☆**

**Annual fuel cost of \$1,530**  
**3.9L per 100km**

Cost per year is an estimate based on petrol price of \$2.80 per litre and an average distance of 14000 km. Emissions and Energy Economy figures standardised to 3P WLTP.

**Stock ID: 33817**