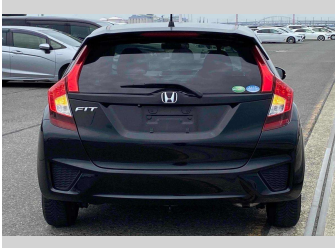
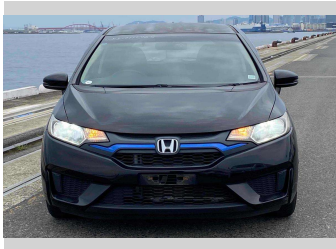


2015 Honda Fit 13G F- PACKAGE



Purchase Price

\$10,480

Includes GST
Excludes on-road costs of \$595

Finance may be available on this vehicle. Ask one of our friendly staff for more information.

Gain peace of mind with Mechanical Breakdown Insurance. **Ask us how.**

Top features

- » ABS Brakes
- » Air Con
- » Air Conditioning
- » Alloys
- » Car Stereo
- » CD Player
- » Dark Interior
- » Electric Windows
- » Keyless Entry
- » Power Steering
- » Push Start
- » Reversing Camera
- » Winker Mirror

Body Style

5 door, Hatchback

Odometer

76,591 km

Engine

1300 cc

Fuel Type

Petrol

Transmission

Automatic, 2WD

Wheels

-

VIN

7AT08G2YX25111765

Interior

Black

Safety



Based on 2024 UCSR rating for 14-20 models

Reg No.

-

Ext Colour

Black

History

-

Seats

5 seats

CO2 Emissions

★★★★★☆☆

116 grams/km

Energy Economy

★★★★☆☆☆☆

**Annual fuel cost of \$1,960
5L per 100km**

Cost per year is an estimate based on petrol price of \$2.80 per litre and an average distance of 14000 km. Emissions and Energy Economy figures standardised to 3P WLTP.

Stock ID: 15494



JAN JAPAN MOTORS

Jan Japan - North Shore | Phone 09 553 8134 | Email wairau@janjapan.co.nz
96 Wairau Road, Wairau Valley, Auckland 0627, New Zealand
www.janjapan.co.nz