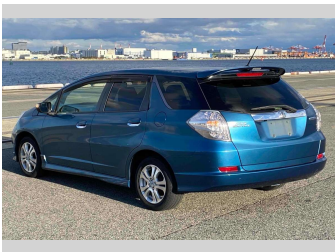
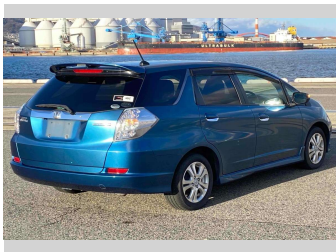
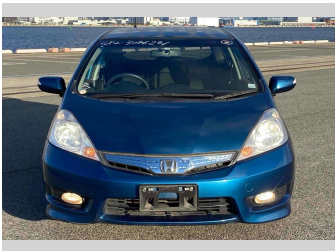
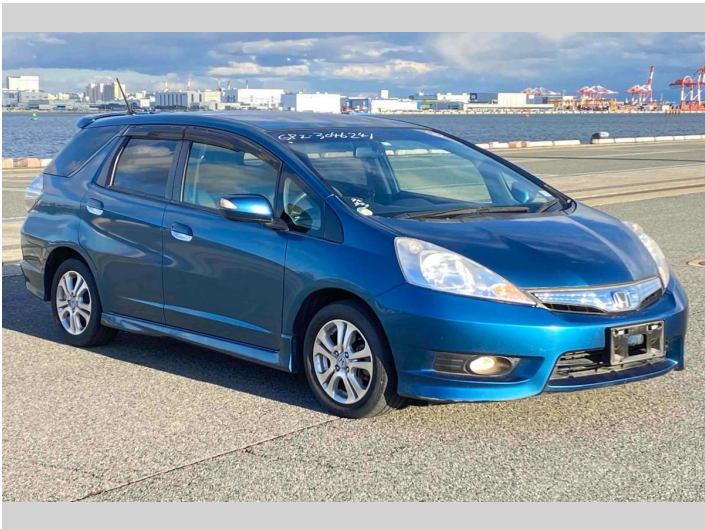


# 2012 Honda Fit Shuttle Hybrid Navi Premium



Purchase Price

**\$8,080**

Includes GST  
Excludes on-road costs of \$595

Finance may be available on this vehicle. Ask one of our friendly staff for more information.

Gain peace of mind with Mechanical Breakdown Insurance. **Ask us how.**

Top features

- » ABS Brakes
- » Air Conditioning
- » Alloys
- » Body Kit
- » CD Player
- » Cruise Control
- » Electric Windows
- » Fog Lights
- » Keyless Entry
- » Power Steering
- » Reversing Camera
- » Spoiler
- » Winker Mirror

Body Style

**5 door, Station Wagon**

Odometer

**65,197 km**

Engine

**1300 cc, Hybrid**

Fuel Type

**Hybrid**

Transmission

**Automatic, 2WD**

Wheels

-

VIN

-

Interior

**Gray**

Safety

-

Reg No.

-

Ext Colour

**Blue**

History

-

Seats

**5 seats**

CO2 Emissions

-

Energy Economy

-

Stock ID: 15234



**JAN JAPAN MOTORS**

Jan Japan - Wholesale | Phone 09 972 1204 | Email [sales@janjapan.co.nz](mailto:sales@janjapan.co.nz)  
10 Progressive Way, East Tāmaki, Auckland 2016, New Zealand  
[www.janjapan.co.nz](http://www.janjapan.co.nz)



4.27 | 333 reviews