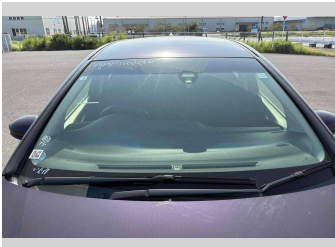


# 2016 Honda Shuttle HYBRID X



## Purchase Price

Includes GST  
Excludes on-road costs of \$595

**POA**

Finance may be available on this vehicle. Ask one of our friendly staff for more information.

Gain peace of mind with Mechanical Breakdown Insurance. **Ask us how.**

## Top features

- » ABS Brakes
- » Air Con
- » Air Conditioning
- » Car Stereo
- » CD Player
- » Cruise Control
- » Electric Mirrors
- » Electric Windows
- » Fog Lights
- » Half Leather Seats
- » Keyless Entry
- » Paddle Shift
- » Power Steering
- » Push Start
- » Reversing Camera
- » Wheel Covers
- » Winker Mirror

Body Style

**5 door, Station Wagon**

Odometer

**93,160 km**

Engine

**1490 cc**

Fuel Type

**Hybrid**

Transmission

**Automatic, 2WD**

Wheels

-

VIN

-

Interior

**Black**

Safety

-

Reg No.

-

Ext Colour

**Purple**

History

-

Seats

**5 seats**

CO2 Emissions

-

Energy Economy

-

**Stock ID: 15937**



**JAN JAPAN MOTORS**

Jan Japan - North Shore | Phone 09 553 8134 | Email [wairau@janjapan.co.nz](mailto:wairau@janjapan.co.nz)  
96 Wairau Road, Wairau Valley, Auckland 0627, New Zealand  
[www.janjapan.co.nz](http://www.janjapan.co.nz)