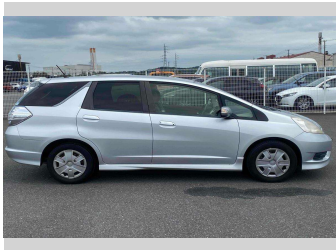
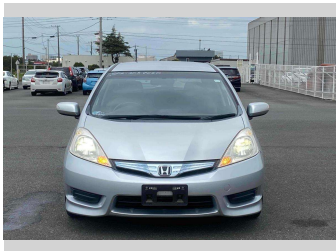
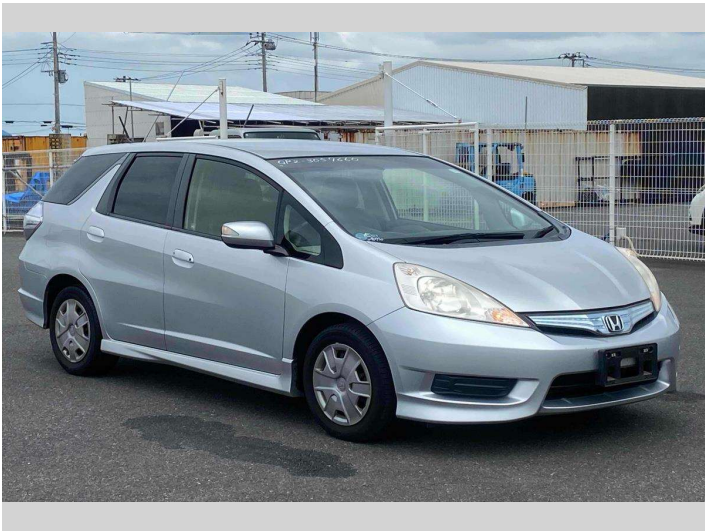


2012 Honda Fit Shuttle Hybrid Smart Selection



Purchase Price

\$8,280

Includes GST
Excludes on-road costs of \$595

Finance may be available on this vehicle. Ask one of our friendly staff for more information.

Gain peace of mind with Mechanical Breakdown Insurance. **Ask us how.**

Top features

- » ABS Brakes
- » Air Con
- » Air Conditioning
- » CD Player
- » Cruise Control
- » Electric Mirrors
- » Electric Windows
- » Parking sensors
- » Power Steering
- » Wheel Covers
- » Winker Mirror

Body Style

5 door, Station Wagon

Odometer

87,668 km

Engine

1300 cc, Hybrid

Fuel Type

Hybrid

Transmission

Automatic, 2WD

Wheels

-

VIN

-

Interior

Black

Safety

-

Reg No.

-

Ext Colour

Silver

History

-

Seats

5 seats

CO2 Emissions

-

Energy Economy

-

Stock ID: 15730



JAN JAPAN MOTORS

Jan Japan - Henderson | Phone 022 4122 366 | Email sales@janjapan.co.nz
320 Lincoln Road, Henderson, Auckland 0610, New Zealand
www.janjapan.co.nz