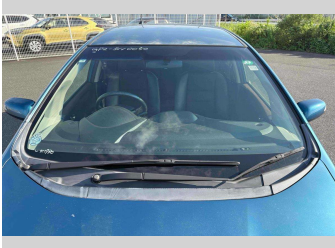
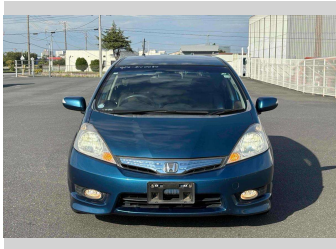


2012 Honda Fit Shuttle Hybrid Smart Selection



Purchase Price

Includes GST
Excludes on-road costs of \$595

POA

Finance may be available on this vehicle. Ask one of our friendly staff for more information.

Gain peace of mind with Mechanical Breakdown Insurance. **Ask us how.**

Top features

- » ABS Brakes
- » Air Con
- » Air Conditioning
- » Car Stereo
- » CD Player
- » Cruise Control
- » Electric Mirrors
- » Electric Windows
- » Fog Lights
- » Keyless Entry
- » Power Steering
- » Reversing Camera
- » Wheel Covers
- » Winker Mirror

Body Style

5 door, Station Wagon

Odometer

92,931 km

Engine

1300 cc, Hybrid

Fuel Type

Hybrid

Transmission

Automatic, 2WD

Wheels

-

VIN

-

Interior

Black

Safety

-

Reg No.

-

Ext Colour

Blue

History

-

Seats

5 seats

CO2 Emissions

-

Energy Economy

-

Stock ID: 15840



JAN JAPAN MOTORS

Jan Japan - Wholesale | Phone 09 972 1204 | Email sales@janjapan.co.nz
10 Progressive Way, East Tāmaki, Auckland 2016, New Zealand
www.janjapan.co.nz



4.28 | 366 reviews