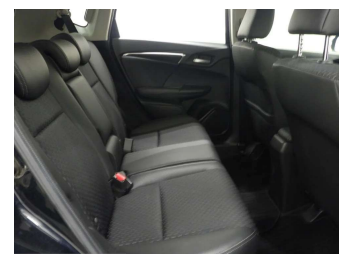
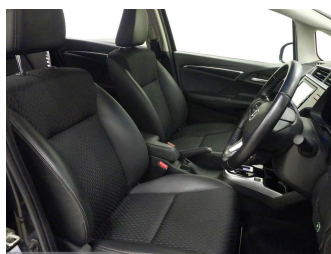
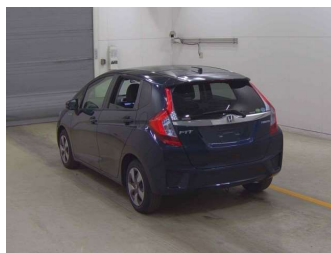
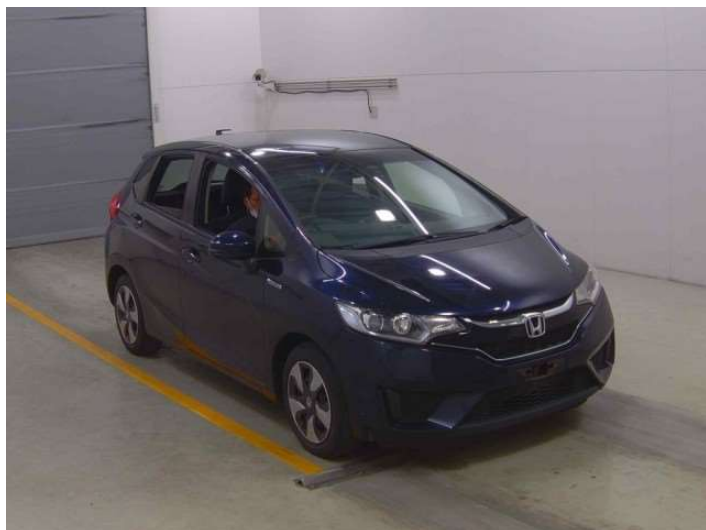


# 2015 Honda Fit Hybrid L Package



**Purchase Price** **POA**  
Includes GST  
 Excludes on-road costs of \$695

Finance may be available on this vehicle. Ask one of our friendly staff for more information.

Gain peace of mind with Mechanical Breakdown Insurance. **Ask us how.**

- Top features**
- » ABS Brakes
  - » Air Conditioning
  - » Alloys
  - » Car Stereo
  - » Central Locking
  - » Climate Control
  - » Cruise Control
  - » Electric Mirrors
  - » Electric Windows
  - » Power Steering
  - » Push Start
  - » Reversing Camera
  - » Winker Mirror

|              |                          |                |                |
|--------------|--------------------------|----------------|----------------|
| Body Style   | <b>5 door, Hatchback</b> | Reg No.        | -              |
| Odometer     | <b>37,692 km</b>         | Ext Colour     | <b>Blue</b>    |
| Engine       | <b>1500 cc, Hybrid</b>   | History        | -              |
| Fuel Type    | <b>Hybrid</b>            | Seats          | <b>5 seats</b> |
| Transmission | <b>Automatic, 2WD</b>    | CO2 Emissions  | -              |
| Wheels       | -                        | Energy Economy | -              |
| VIN          | -                        |                |                |
| Interior     | <b>Grey</b>              |                |                |
| Safety       | -                        |                |                |

**Stock ID: 35353**