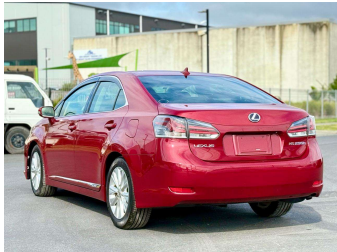
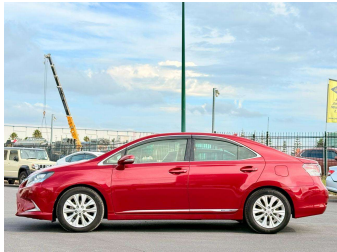


2014 Lexus HS250H



Purchase Price

\$16,900

Includes GST
Excludes on-road costs of \$595

Finance may be available on this vehicle. Ask one of our friendly staff for more information.

Gain peace of mind with Mechanical Breakdown Insurance. **Ask us how.**

Top features

- » ABS Brakes
- » Air Conditioning
- » Alloys
- » AUX Input
- » Car Stereo
- » Central Locking
- » Climate Control
- » Cruise Control
- » Dark Interior
- » Electric Mirrors
- » Electric Windows
- » Fog Lights
- » Folding Side Mirrors
- » Half Leather Seats
- » Heated Seats
- » Heated Seats
- » Keyless Entry
- » Lane Keep Assist

Body Style

4 door, Sedan

Odometer

69,153 km

Engine

2400 cc, Hybrid

Fuel Type

Hybrid

Transmission

Automatic, 2WD

Wheels

-

VIN

7AT0B01CX25064005

Interior

Gray

Safety



Based on 2024 VSRR rating

Reg No.

-

Ext Colour

Red

History

-

Seats

5 seats

CO2 Emissions

★★★★★☆☆

134 grams/km

Energy Economy

★★★★☆☆☆☆

Annual fuel cost of \$2,270

5.8L per 100km

Cost per year is an estimate based on petrol price of \$2.80 per litre and an average distance of 14000 km. Emissions and Energy Economy figures standardised to 3P WLTP.

Stock ID: 14533



JAN JAPAN MOTORS

Jan Japan - Mt Wellington | Phone 09 278 9643 | Email
sales.mtw@janjapan.co.nz
5 Fraser Road, Mount Wellington, Auckland 1072
www.janjapan.co.nz