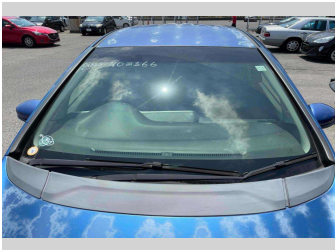
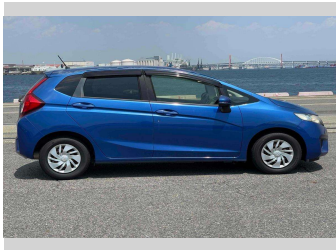
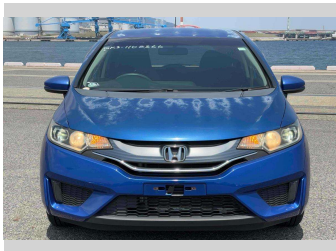


2015 Honda Fit 13G F- PACKAGE



Purchase Price

Includes GST
Excludes on-road costs of \$595

POA

Finance may be available on this vehicle. Ask one of our friendly staff for more information.

Gain peace of mind with Mechanical Breakdown Insurance. **Ask us how.**

Top features

- » ABS Brakes
- » Air Con
- » Air Conditioning
- » Alloys
- » Car Stereo
- » CD Player
- » Electric Mirrors
- » Electric Windows
- » Keyless Entry
- » Power Steering
- » Push Start
- » Reversing Camera
- » Winker Mirror

Body Style
5 door, Hatchback

Odometer
24,936 km

Engine
1300 cc

Fuel Type
Petrol

Transmission
Automatic, 2WD

Wheels
-

VIN
-

Interior
Black

Safety
-

Reg No.
-

Ext Colour
Blue

History
-

Seats
5 seats

CO2 Emissions
-

Energy Economy
-

Stock ID: 15813



JAN JAPAN MOTORS

Jan Japan - Wholesale | Phone 09 972 1204 | Email sales@janjapan.co.nz
10 Progressive Way, East Tāmaki, Auckland 2016, New Zealand
www.janjapan.co.nz



★★★★★
4.28 | 366 reviews