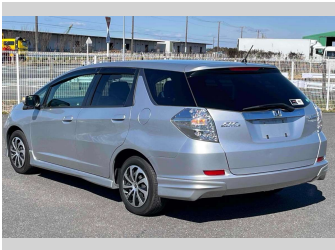
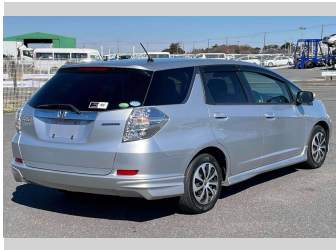
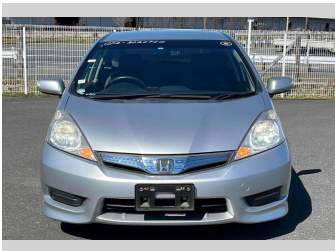
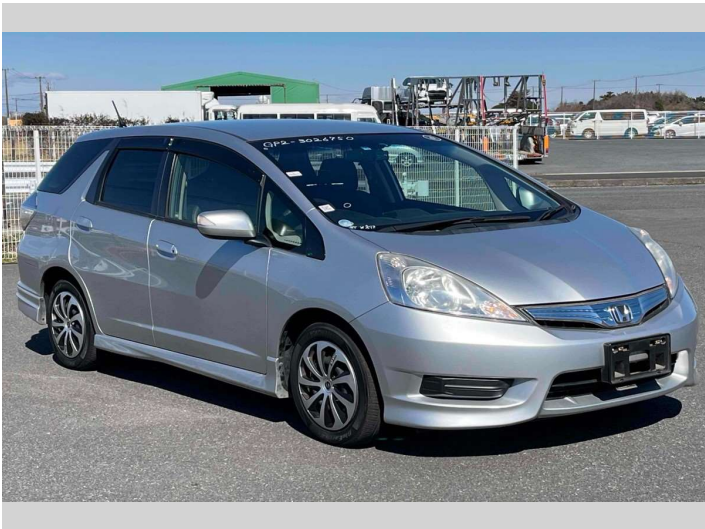


# 2012 Honda Fit Shuttle Hybrid Smart Selection



Purchase Price

**\$7,880**

Includes GST  
Excludes on-road costs of \$595

Finance may be available on this vehicle. Ask one of our friendly staff for more information.

Gain peace of mind with Mechanical Breakdown Insurance. **Ask us how.**

Top features

- » ABS Brakes
- » Air Conditioning
- » Car Stereo
- » CD Player
- » Cruise Control
- » Electric Windows
- » Keyless Entry
- » Power Steering
- » Reversing Camera
- » Wheel Covers
- » Winker Mirror

Body Style  
**5 door, Station Wagon**

Odometer  
**96,826 km**

Engine  
**1300 cc, Hybrid**

Fuel Type  
**Hybrid**

Transmission  
**Automatic, 2WD**

Wheels  
-

VIN  
-

Interior  
**Gray**

Safety  
-

Reg No.  
-

Ext Colour  
**Silver**

History  
-

Seats  
**5 seats**

CO2 Emissions  
-

Energy Economy  
-

Stock ID: 15171



**JAN JAPAN MOTORS**

Jan Japan - Mt Wellington | Phone 09 278 9643 | Email  
sales.mtw@janjapan.co.nz  
5 Fraser Road, Mount Wellington, Auckland 1072  
www.janjapan.co.nz