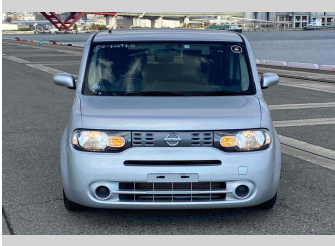


2019 Nissan Cube 15X



Purchase Price

Includes GST
Excludes on-road costs of \$595

\$9,980

Finance may be available on this vehicle. Ask one of our friendly staff for more information.

Gain peace of mind with Mechanical Breakdown Insurance. **Ask us how.**

Top features

- » ABS Brakes
- » Air Conditioning
- » Car Stereo
- » Central Locking
- » Dark Interior
- » Digital Dash
- » Electric Mirrors
- » Electric Windows
- » Power Steering
- » Push Start
- » Reversing Camera

Body Style
5 door, Hatchback

Odometer
66,686 km

Engine
1500 cc

Fuel Type
Petrol

Transmission
Automatic, 2WD

Wheels
-

VIN
7AT0DH63X25406740

Interior
Gray

Safety



Based on 2024 VSRR rating

Reg No.
-

Ext Colour
Silver

History
-

Seats
5 seats

CO2 Emissions
★★★★☆
143 grams/km

Energy Economy
★★★★☆☆

Annual fuel cost of \$2,430
6.2L per 100km

Cost per year is an estimate based on petrol price of \$2.80 per litre and an average distance of 14000 km. Emissions and Energy Economy figures standardised to 3P WLTP.

Stock ID: 14747



Jan Japan - Wholesale | Phone 09 972 1204 | Email sales@janjapan.co.nz
10 Progressive Way, East Tāmaki, Auckland 2016, New Zealand
www.janjapan.co.nz

