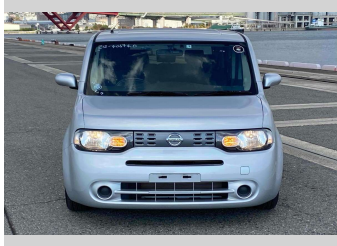


# 2019 Nissan Cube 15X



## Purchase Price

Includes GST  
Excludes on-road costs of \$595

**\$11,680**

Finance may be available on this vehicle. Ask one of our friendly staff for more information.

Gain peace of mind with Mechanical Breakdown Insurance. **Ask us how.**

## Top features

- » ABS Brakes
- » Air Conditioning
- » Car Stereo
- » Central Locking
- » Dark Interior
- » Digital Dash
- » Electric Mirrors
- » Electric Windows
- » Power Steering
- » Push Start
- » Reversing Camera

Body Style  
**5 door, Hatchback**

Odometer  
**66,686 km**

Engine  
**1500 cc**

Fuel Type  
**Petrol**

Transmission  
**Automatic, 2WD**

Wheels  
**-**

VIN  
**7AT0DH63X25406740**

Interior  
**Gray**

Safety



Based on 2024 VSRR rating

Reg No.  
**-**

Ext Colour  
**Silver**

History  
**-**

Seats  
**5 seats**

CO2 Emissions  
**★★★★☆**  
**143 grams/km**

Energy Economy  
**★★★★☆☆**

**Annual fuel cost of \$2,430**  
**6.2L per 100km**

Cost per year is an estimate based on petrol price of \$2.80 per litre and an average distance of 14000 km. Emissions and Energy Economy figures standardised to 3P WLTP.

**Stock ID: 14747**