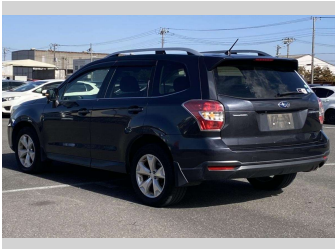


2014 Subaru Forester 2.0I-L EYESIGHT



Purchase Price

Includes GST
Excludes on-road costs of \$595

\$14,780

Finance may be available on this vehicle. Ask one of our friendly staff for more information.

Gain peace of mind with Mechanical Breakdown Insurance. **Ask us how.**

Top features

- » ABS Brakes
- » Air Conditioning
- » Alloys
- » Car Stereo
- » Cruise Control
- » Electric Mirrors
- » Electric Windows
- » Fog Lights
- » Heated Seats
- » Keyless Entry
- » Lane Keep Assist
- » Power Seats
- » Power Steering
- » Push Start
- » Radar Cruise Control
- » Reversing Camera
- » Roof Rack
- » Spoiler

Body Style

5 door, SUV / 4x4

Odometer

90,563 km

Engine

2000 cc

Fuel Type

Petrol

Transmission

Automatic, 4WD

Wheels

Factory Alloys

VIN

7AT0GF17X25047813

Interior

Gray

Safety



Based on 2024 UCSR rating for 12-18 models

Reg No.

-

Ext Colour

Gray

History

-

Seats

5 seats

CO2 Emissions

★★★★☆

173 grams/km

Energy Economy

★★☆☆☆

**Annual fuel cost of \$2,900
7.4L per 100km**

Cost per year is an estimate based on petrol price of \$2.80 per litre and an average distance of 14000 km. Emissions and Energy Economy figures standardised to 3P WLTP.

Stock ID: 14995



JAN JAPAN MOTORS

Jan Japan - Mt Wellington | Phone 09 278 9643 | Email
sales.mtw@janjapan.co.nz
5 Fraser Road, Mount Wellington, Auckland 1072
www.janjapan.co.nz