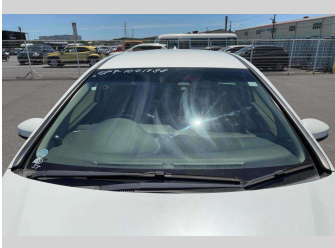
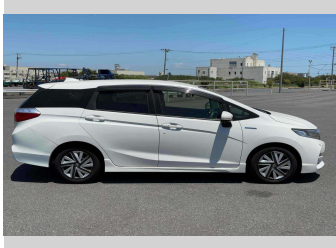
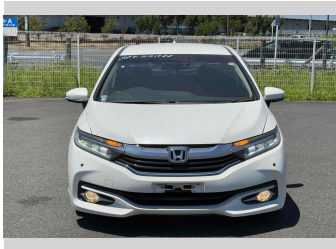


# 2016 Honda Shuttle Hybrid



### Purchase Price

Includes GST  
Excludes on-road costs of \$595

**POA**

Finance may be available on this vehicle. Ask one of our friendly staff for more information.

Gain peace of mind with Mechanical Breakdown Insurance. **Ask us how.**

### Top features

- » ABS Brakes
- » Air Con
- » Air Conditioning
- » Alloys
- » Car Stereo
- » CD Player
- » Cruise Control
- » Electric Mirrors
- » Electric Windows
- » Keyless Entry
- » Paddle Shift
- » Parking sensors
- » Power Steering
- » Push Start
- » Reversing Camera
- » Winker Mirror

Body Style  
**5 door, Station Wagon**

Odometer  
**97,739 km**

Engine  
**1500 cc, Hybrid**

Fuel Type  
**Hybrid**

Transmission  
**Automatic, 2WD**

Wheels  
-

VIN  
-

Interior  
**Black**

Safety  
-

Reg No.  
-

Ext Colour  
**Pearl White**

History  
-

Seats  
**5 seats**

CO2 Emissions  
-

Energy Economy  
-

**Stock ID: 15818**