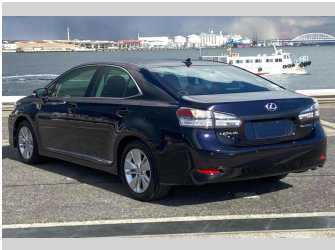
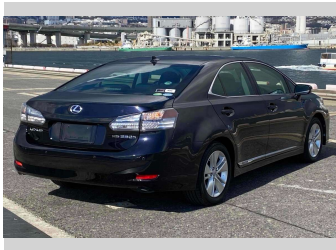


2012 Lexus HS250H Hybrid



Purchase Price

Includes GST
Excludes on-road costs of \$595

\$14,280

Finance may be available on this vehicle. Ask one of our friendly staff for more information.

Gain peace of mind with Mechanical Breakdown Insurance. **Ask us how.**

Top features

- » ABS Brakes
- » Air Conditioning
- » Car Stereo
- » CD Player
- » Cruise Control
- » Electric Windows
- » Fog Lights
- » Keyless Entry
- » Parking sensors
- » Power Steering
- » Push Start
- » Reversing Camera
- » Winker Mirror

Body Style

4 door, Sedan

Odometer

59,197 km

Engine

2400 cc, Hybrid

Fuel Type

Hybrid

Transmission

Automatic, 2WD

Wheels

-

VIN

-

Interior

Gray

Safety



Based on 2024 VSRR rating

Reg No.

-

Ext Colour

Black

History

-

Seats

5 seats

CO2 Emissions

-

Energy Economy

☆☆☆☆☆☆

Annual fuel cost not available

Energy Consumption unknown.

Stock ID: 15144