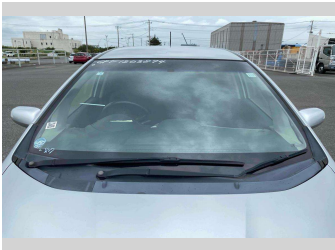
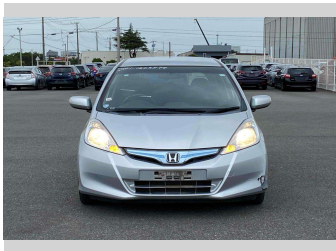


# 2012 Honda Fit Hybrid Smart Selection



### Purchase Price

**\$7,880**

Includes GST  
Excludes on-road costs of \$595

Finance may be available on this vehicle. Ask one of our friendly staff for more information.

Gain peace of mind with Mechanical Breakdown Insurance. **Ask us how.**

### Top features

- » ABS Brakes
- » Air Con
- » Air Conditioning
- » Car Stereo
- » CD Player
- » Climate Control
- » Cruise Control
- » Electric Mirrors
- » Electric Windows
- » Keyless Entry
- » Power Steering
- » Reversing Camera
- » Wheel Covers
- » Winker Mirror

Body Style

**5 door, Hatchback**

Odometer

**53,694 km**

Engine

**1330 cc, Hybrid**

Fuel Type

**Hybrid**

Transmission

**Automatic, 2WD**

Wheels

-

VIN

**7AT08G2YX25203874**

Interior

**Gray**

Safety



Based on 2024 UCSR rating for 08-14 models

Reg No.

-

Ext Colour

**Silver**

History

-

Seats

**5 seats**

CO2 Emissions

★★★★☆

**111 grams/km**

Energy Economy

★★★★☆☆

**Annual fuel cost of \$1,840  
4.7L per 100km**

Cost per year is an estimate based on petrol price of \$2.80 per litre and an average distance of 14000 km. Emissions and Energy Economy figures standardised to 3P WLTP.

**Stock ID: 15608**



**JAN JAPAN MOTORS**

Jan Japan - Henderson | Phone 022 4122 366 | Email [sales@janjapan.co.nz](mailto:sales@janjapan.co.nz)  
320 Lincoln Road, Henderson, Auckland 0610, New Zealand  
[www.janjapan.co.nz](http://www.janjapan.co.nz)