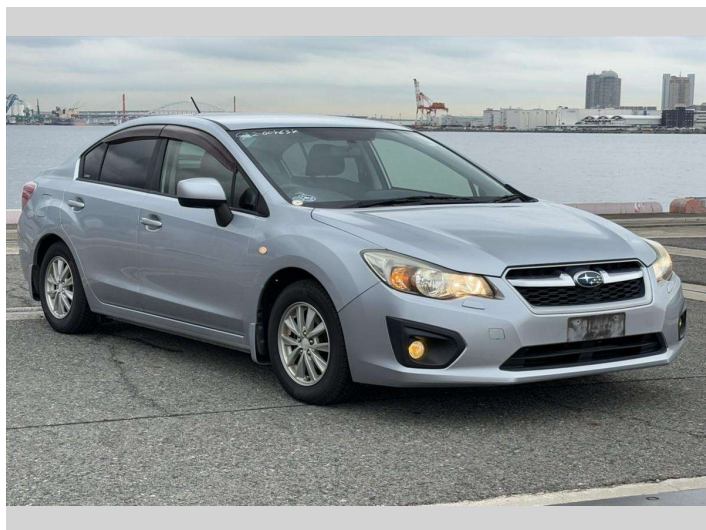


# 2012 Subaru Impreza G4 1.6i



## Purchase Price

Includes GST  
Excludes on-road costs of \$695

# POA

Finance may be available on this vehicle. Ask one of our friendly staff for more information.

Gain peace of mind with Mechanical Breakdown Insurance. **Ask us how.**

## Top features

- » ABS Brakes
- » Air Conditioning
- » Electric Windows
- » Power Steering

Body Style

**4 door, Sedan**

Odometer

**95,582 km**

Engine

**1600 cc**

Fuel Type

**Petrol**

Transmission

**Automatic, 2WD**

Wheels

-

VIN

**7AT0GF09X25004634**

Interior

**Gray**

Safety



Based on 2025 UCSR rating for 12-16 models

Reg No.

-

Ext Colour

**Silver**

History

-

Seats

**5 seats**

CO2 Emissions

★★★★☆

**153 grams/km**

Energy Economy

★★★★☆☆

**Annual fuel cost of \$2,590  
6.6L per 100km**

Cost per year is an estimate based on petrol price of \$2.80 per litre and an average distance of 14000 km. Emissions and Energy Economy figures standardised to 3P WLTP.

**Stock ID: 3390**