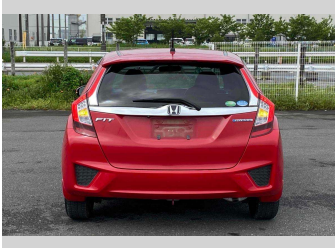
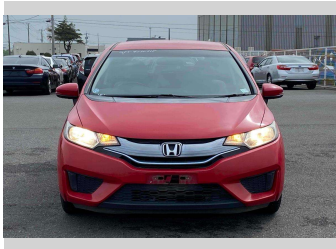
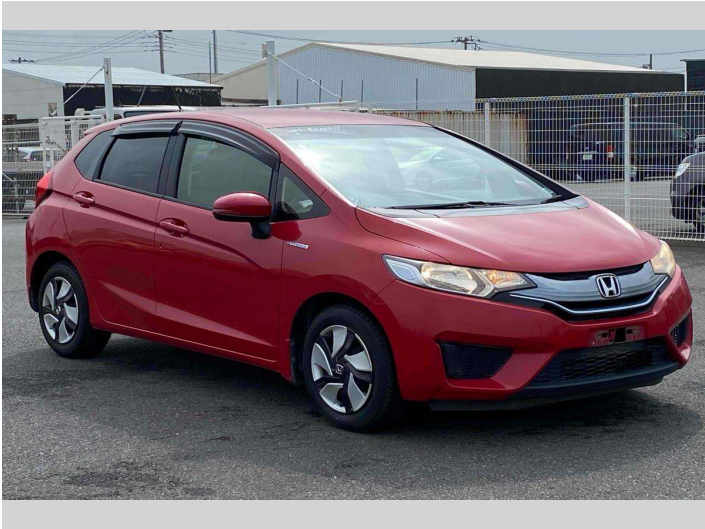


# 2014 Honda Fit Shuttle F Package



## Purchase Price

Includes GST  
Excludes on-road costs of \$495

**POA**

Finance may be available on this vehicle. Ask one of our friendly staff for more information.

Gain peace of mind with Mechanical Breakdown Insurance. **Ask us how.**

## Top features

- » ABS Brakes
- » Air Conditioning
- » CD Player
- » Climate Control
- » Electric Mirrors
- » Electric Windows
- » Parking Sensors
- » Power Steering
- » Push Start
- » Spoiler
- » Wheel Covers
- » Winker Mirror

Body Style

**5 door, Hatchback**

Odometer

**86,486 km**

Engine

**1500 cc, Hybrid**

Fuel Type

**Hybrid**

Transmission

**Automatic, 2WD**

Wheels

-

VIN

-

Interior

**Gray**

Safety

-

Reg No.

-

Ext Colour

**Red**

History

-

Seats

**5 seats**

CO2 Emissions

-

Energy Economy

-

**Stock ID: 15392**



**JAN JAPAN MOTORS**

Jan Japan - Wholesale | Phone 09 972 1204 | Email [sales@janjapan.co.nz](mailto:sales@janjapan.co.nz)  
10 Progressive Way, East Tāmaki, Auckland 2016, New Zealand  
[www.janjapan.co.nz](http://www.janjapan.co.nz)



★★★★☆  
4.27 | 340 reviews